



Chelmsford Public Schools  
**Road Map to Our Future**



# What are we considering?



The potential construction of a new middle school that will serve ALL Chelmsford Public School students while alleviating overcrowding at multiple levels in the district.

Options to examine:

- New Grade 5 – 6 School – 1:1 Replacement of Parker
- New Grade 5 – 8 School – Combining McCarthy & Parker
- New Grade 4 – 6 School – Grade Level Realignment



A single project that accomplishes the most for the district and town.



Parker Middle School was selected as the priority project – we were able to make a more compelling argument over considering McCarthy Middle School based on capacity and facility conditions.

# Current Options Under Consideration

## Option: Parker 5<sup>th</sup>-6<sup>th</sup>

Parker Site	McCarthy Site	Byam Site	Center Site	Harrington Site	South Row Site
New 5 <sup>th</sup> -6 <sup>th</sup>	7 <sup>th</sup> -8 <sup>th</sup>	K-4 <sup>th</sup>	K-4 <sup>th</sup>	K-4 <sup>th</sup>	K-4 <sup>th</sup>

## Option: Parker 5<sup>th</sup>-8<sup>th</sup>

Parker Site	McCarthy Site	Byam Site	Center Site	Harrington Site	South Row Site
New 5 <sup>th</sup> -8 <sup>th</sup>	PK-4 <sup>th</sup>	K-4 <sup>th</sup>	K-4 <sup>th</sup>	K-4 <sup>th</sup>	K-4 <sup>th</sup>

## Option: Parker 4<sup>th</sup>-6<sup>th</sup>

Parker Site	McCarthy Site	Byam Site	Center Site	Harrington Site	South Row Site
New 4 <sup>th</sup> -6 <sup>th</sup>	7 <sup>th</sup> -8 <sup>th</sup>	K-3 <sup>rd</sup>	K-3 <sup>rd</sup>	K-3 <sup>rd</sup>	K-3 <sup>rd</sup>

# Why are we considering this?

---

- Current enrollment at the elementary and middle school levels has reached capacity even with the modular classrooms.
- Enrollment projections show a significant increase in student population over the next 10 years – NESDEC Demographic Study.
- Parker Middle School design lacks desired functionality to continue to serve as a long-term education facility for the district.
- Construction of a new middle school to replace Parker will provide ALL Chelmsford Public School students with a new state of the art facility and may alleviate overcrowding at the elementary level.
- Partnering with the MSBA on a new middle school project will provide approximately half (50%) of the approved project costs, lessening the financial cost of a new school construction project to the Town.

# FACILITY AGE CHART

Building	Year Built	Age of Building	Modular Classrooms	Notes
Byam Elementary School	1970	54	6	Modular classrooms added summer of 2017.
Center Elementary School	1955	69	4	Building fully renovated in 1999. Modular classrooms added summer of 2017.
Harrington Elementary School	1968	56	6	Modular classrooms added summer of 2017.
South Row Elementary School	1960	64	8	6 modular classrooms added summer of 2017. 2 modular classrooms added summer 1993.
McCarthy Middle School	1957	67	4	Modular classrooms added summer 2003.
Parker Middle School	1965	59	10	Modular classrooms added summer 2003.
Chelmsford High School	1974	50	0	





## History

**2015**: The District hired Dore and Whittier Architects (D+W) to assist in developing a long-term master plan to address both facility and capacity needs across the district.

**2016**: The Master Plan included 16 options designed to resolve the facility needs and overcrowding concerns. Of the sixteen options six were chosen for further study.

**2017**: The District added modular classrooms to each of the elementary schools to address immediate overcrowding and the addition of full day Kindergarten.

**2021**: The District requested an updated Master Plan from D+W. New enrollment projections were reviewed. These indicated actual enrollments from 2016-2021 had exceeded the 2016 projections.

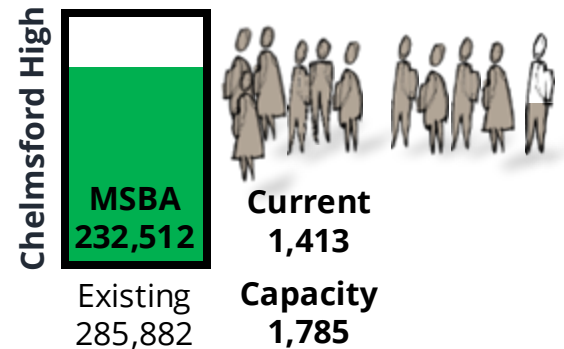
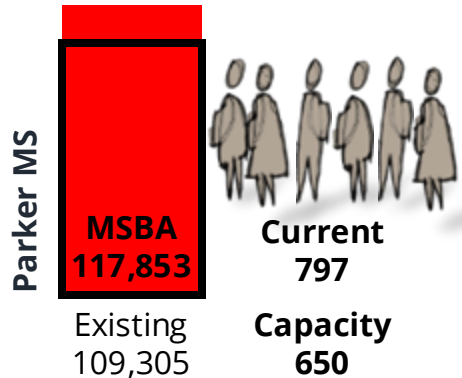
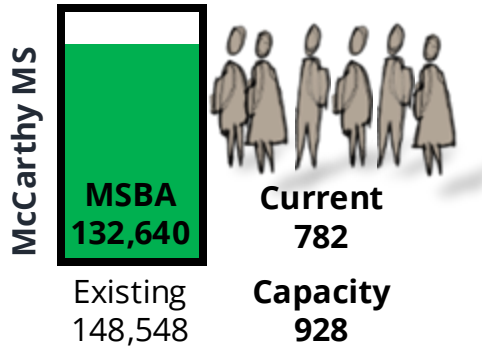
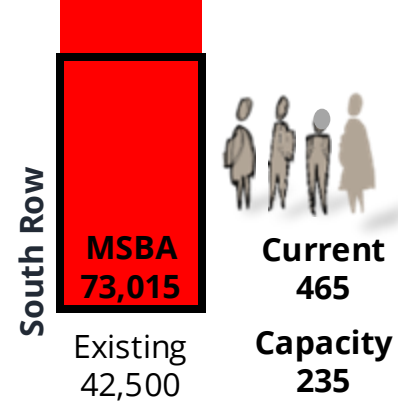
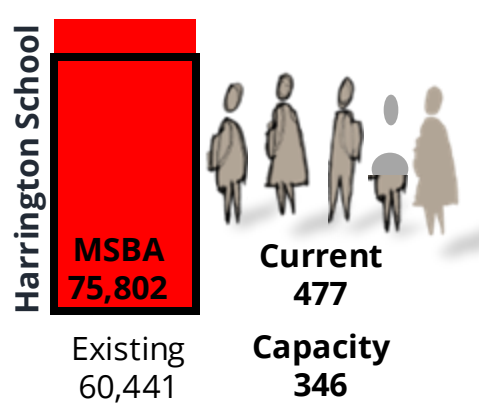
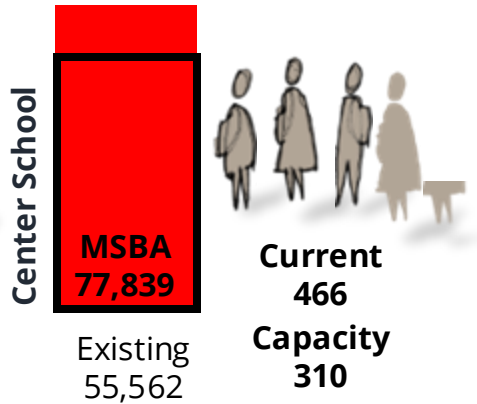
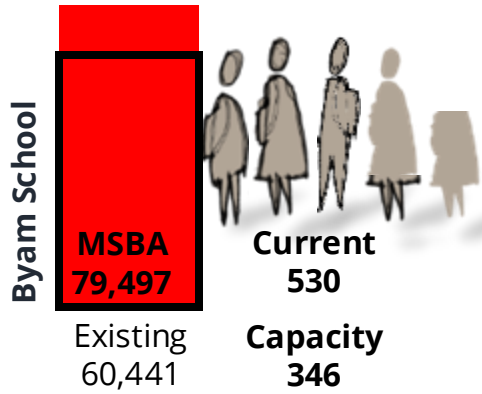
# Previous MSBA Applications

---

<b>Year</b>	<b>School</b>	<b>Status</b>
2018	Chelmsford High School	Not Accepted
2019	Chelmsford High School	Not Accepted
2020	Chelmsford High School	Not Accepted
2021	Chelmsford High School	Not Accepted
2022	Parker Middle School	Not Accepted
2023	Parker Middle School	Accepted – Eligibility Invitation

Massachusetts  
School Building  
Authority





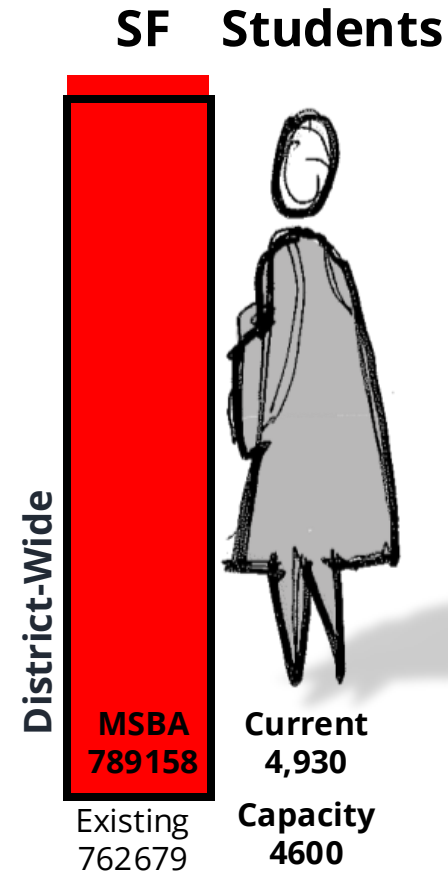
**NOTE:**

Only permanent construction (**not modular classroom buildings**) have been included in the GSQ.

Capacity has been determined by inputting the GSF into the **2016 MSBA Space Summary\***.

Westlands PK students and facility have not been included in the District Wide calculations

\* This information has not been updated to reflect the current MSBA space summary





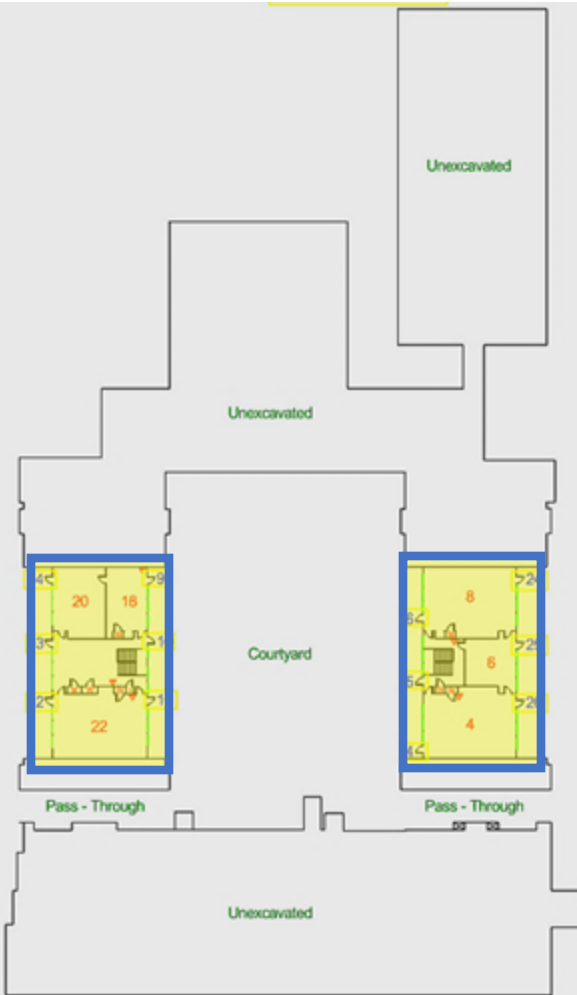
# Projected Enrollments in Grade Combinations 10-year Projection

	Base	Year 1	Year 2	Year 3	Year 4	Year 5	Year 6	Year 7	Year 8	Year 9	Year 10		
	2023/24	2024/25	2025/26	2026/27	2027/28	2028/29	2029/30	2030/31	2031/32	2032/33	2033/34		Increase
Elementary School (K-4)	1938	1976	1988	2055	2115	2132	2161	2166	2141	2144	2151		213
Middle School (5-8)	1579	1600	1652	1663	1658	1708	1693	1735	1828	1850	1878		299
High School (9-12)	1413	1410	1429	1448	1464	1482	1533	1543	1537	1583	1570		157
Total:	4930	4986	5069	5166	5237	5322	5387	5444	5506	5577	5599		669

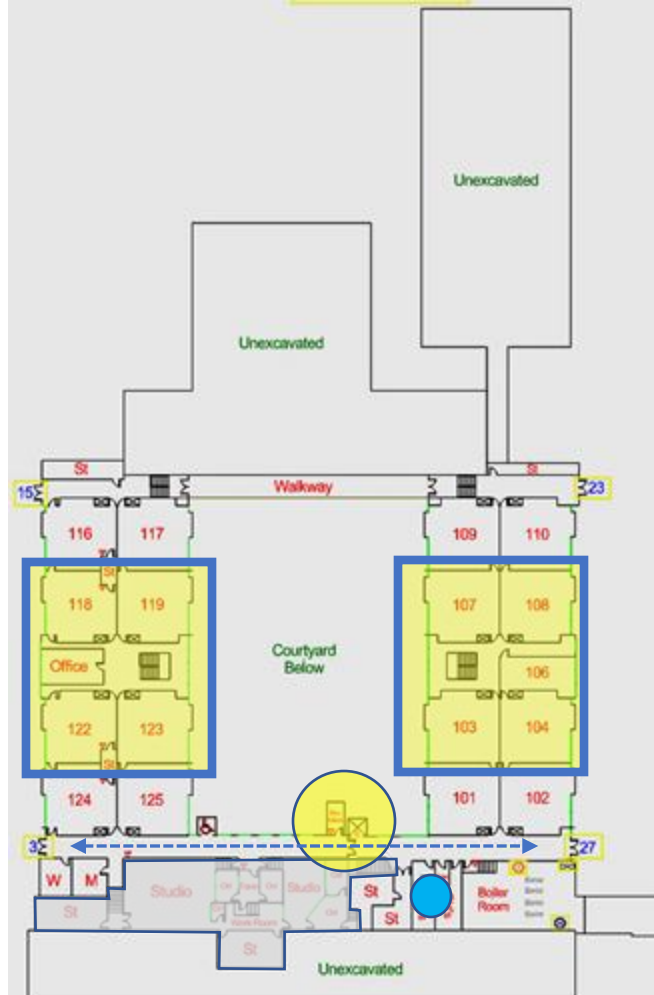


# Future Parker Needs

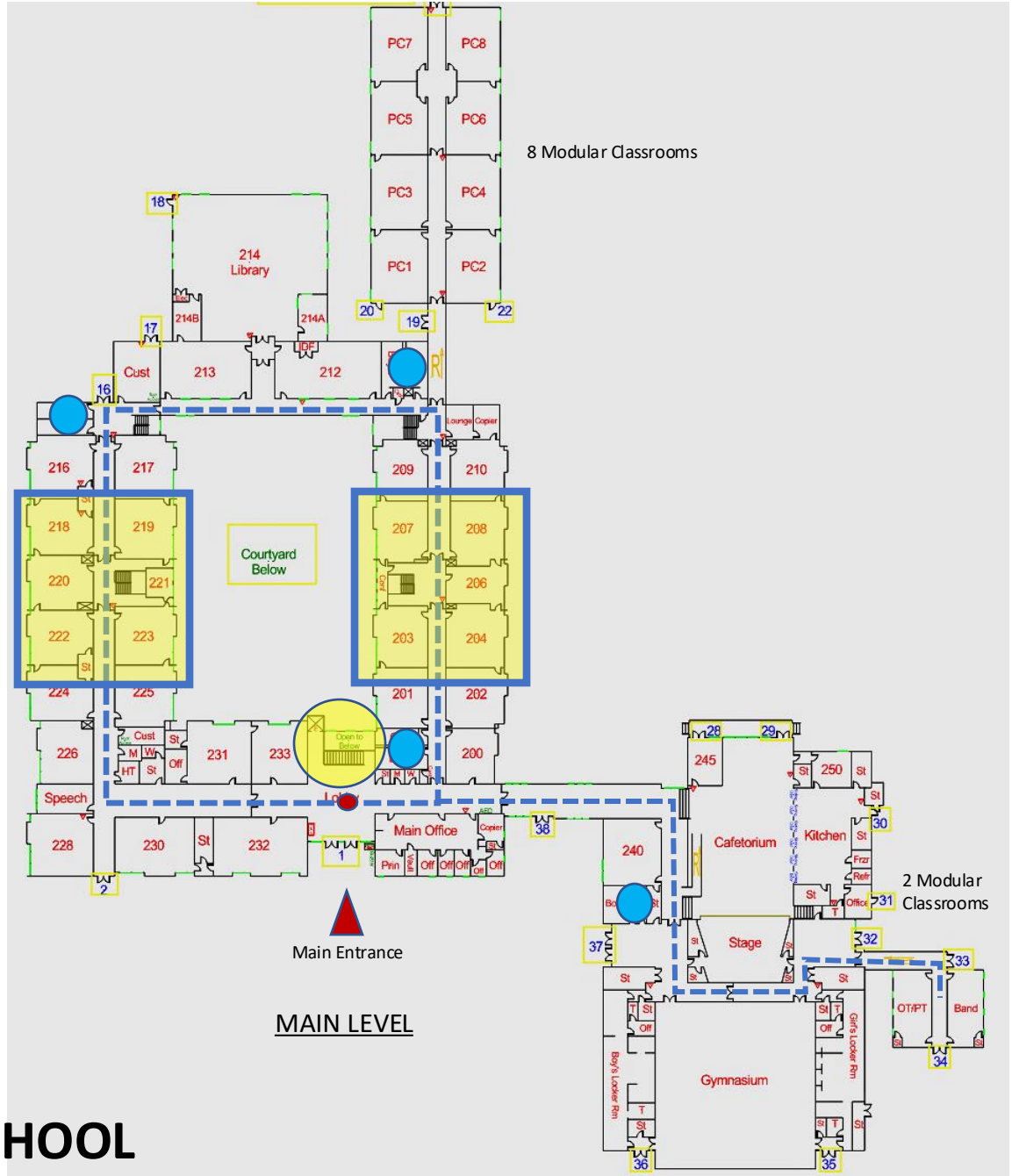
- Replacement of existing modular classrooms
- Exterior and Interior Architectural Elements – ADA Accommodations
- Mechanical, Electrical and Plumbing Upgrades
- Hazardous Material Remediation
- Any plans for significant renovations or additions may trigger multiple code upgrade requirements outside of the proposed area of renovation or addition and could require work to all areas of the existing facility. Code compliance measures to be considered:
  - Structural upgrades triggered by additions and renovations
  - Fire sprinkler system installation required with additions and renovations
  - Handicap accessibility requirements triggered by upgrades



2<sup>nd</sup> LOWER LEVEL

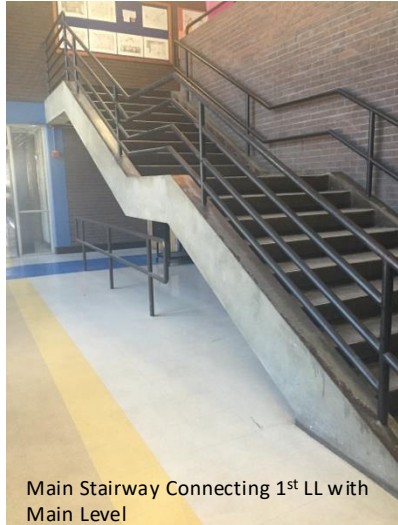


1<sup>st</sup> LOWER LEVEL



MAIN LEVEL

# PARKER MIDDLE SCHOOL



Main Stairway Connecting 1<sup>st</sup> LL with Main Level



Stairway Connecting All 3 Levels (no headroom under this area)



ADA Access to the Lower Level (no interior access is available)



Student Corridor



General Classrooms (exposed pipes, no acoustical ceiling treatments)



Teaching Space (poor lighting, limited day light, exposed pipes)



Cafeteria and Stage (stage is not accessible from cafeteria space)



Music Classroom (exposed wires, no acoustical ceiling or wall treatments)

# PARKER MIDDLE SCHOOL



Science room



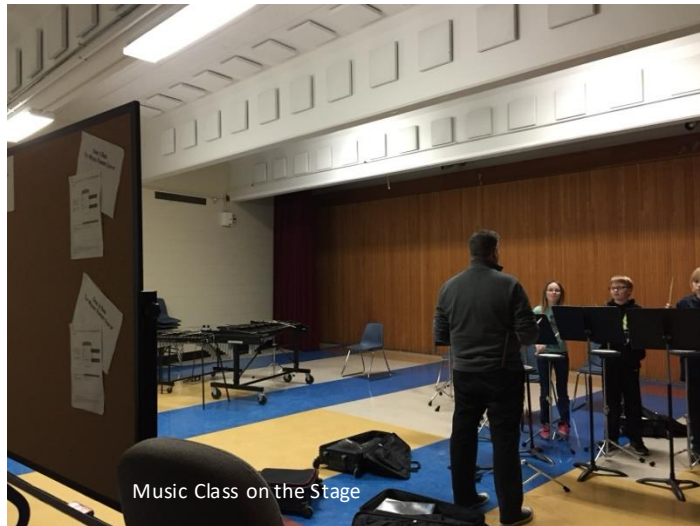
Gym



Health Classroom in Modular Classroom Space



Cafeteria



Music Class on the Stage



Gym

# PARKER MIDDLE SCHOOL



## History

**2022**: With an eye to the future the District submitted a Statement of Interest (SOI) to the Massachusetts School Board Authority (MSBA) for a middle school project. The SOI requested the feasibility study include multiple grade level configurations and enrollments so the District could determine which was the best fit for the community.

**2023**: The MSBA voted to invite Chelmsford into the Core Program and eligibility period is scheduled to begin April 1, 2024.

**2024**: The MSBA voted to invite Chelmsford to conduct a Feasibility Study to examine three (3) construction options involving Parker Middle School.



# QUESTIONS

