

CURRICULUM INSTRUCTION AND ASSESSMENT

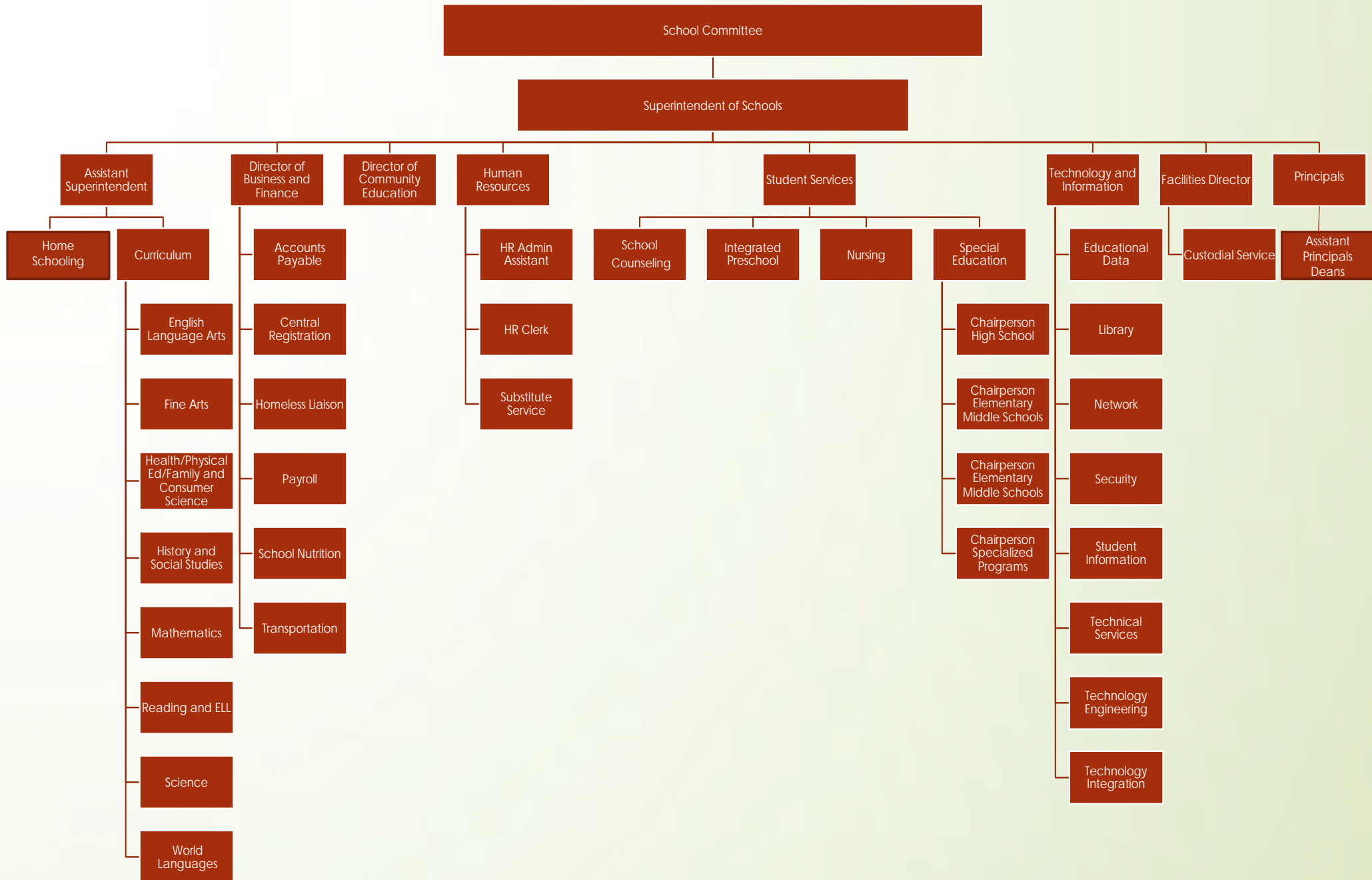


Chelmsford Public Schools
230 North Road
Chelmsford, MA 01824
www.chelmsford.k12.ma.us





CHELMSFORD PUBLIC SCHOOLS ORGANIZATION CHART





CURRICULUM DEPARTMENT ORGANIZATION CHART



Assistant Superintendent

Curriculum, Instruction, and Assessment

English
Language Arts

Fine and
Performing Arts

Health/Physical
Ed/Family and
Consumer
Science

History and
Social Studies

Mathematics

Literacy &
ELL

Science

World
Languages

Visual Arts;
Studio/Media

Music/Theater

Title One

Cultural
Exchange

CENTRAL OFFICE



Dr. LINDA HIRSCH, ASSISTANT SUPERINTENDENT

Dr. Linda J. Hirsch is the Assistant Superintendent for the Chelmsford Public Schools. In her role as Assistant Superintendent, Dr. Hirsch oversees all curriculum, instruction, and assessment in the district. Her previous positions were elementary teacher, special education teacher, English teacher, Department Facilitator and Department Coordinator of English Language Arts where she supervised a team of over 50 English language arts educators.

In addition to her role as Assistant Superintendent, Dr. Hirsch is a graduate instructor at Fitchburg State University. Dr. Hirsch has become an expert in curriculum, instruction, and assessment teaching both new and established teachers in the field of education. Dr. Hirsch's course instruction includes: Universal Design for Learning, Data Analysis, Curriculum and Assessment for Teachers, and Policy, Politics; Curriculum, Educational Leadership and Management, and Educational Research. Dr. Hirsch is skilled in the theory and practice that enables her to improve student learning in the classroom and to teach about leadership.

Dr. Hirsch had taught various professional development courses for Chelmsford Public Schools including Web 2.0 Technologies for the English Teacher and 6-Trait Writing. She has also led the way for writing across the curriculum, running courses for science and social studies teachers on incorporating writing into the curriculum and using common language, data protocols, and rubrics to score student work.

Dr. Hirsch is a member of GS-21 (Global Studies/21st Century Skills), a committee of superintendents/assistant superintendents interested in promoting global education in Massachusetts. Dr. Hirsch has presented in other districts and conferences, including the Lawrence Public Schools, on *Teacher Evaluation* and use of *Common Assessment*, The New England League of Middle Schools Conference (NELMS) on *Universal Design for Learning, Data Analysis, and Learning Walks*, and the Massachusetts Computer Using Educators Conference (MassCUE) on *Technology for Universal Design for Learning and Social Media in Schools*. In addition, she has presented on *Connecting with the Community through Media* at the MASS/MASC Conference.

Dr. Hirsch's academic work includes an A.A.S. in Business and a B.A. in English from the University of New Hampshire, a CAGS from Rivier College in Leadership and Instruction, and a M.Ed. and an Ed.D. from Northeastern University in both Curriculum and Instruction and Organizational Leadership.





MATHEMATICS

Dr. Matthew Beyranevand

Department Coordinator of Mathematics

Grade Level Serviced: K-12

Dr. Matthew Beyranevand is the K-12 Mathematics Coordinator for the Chelmsford Public Schools. After years as a middle school classroom mathematics teacher, Dr. Beyranevand transitioned into the school administration. He is leading all elementary mathematics instruction and a department of over 40 middle and high school math teachers. As a graduate instructor in mathematics and education at UMASS Lowell and Fitchburg State University, Dr. Beyranevand has become an expert in techniques for instructing both new and established teachers. Having taught the courses Curriculum and Assessment for Teachers, History of Mathematics, Working with the Range of Students in Mathematics, and Teaching for Mathematical Understanding, Dr. Beyranevand is familiar with all of the techniques necessary to improve student learning in the classroom.

Dr. Beyranevand is a lifelong learner in education. Having completed his master's degree (2003) and doctorate (2010) at the University of Massachusetts, Lowell, he is experienced with current research involving mathematics education. His dissertation on investigating multiple representations of mathematical concepts led to articles published on the same topic, as well as on the impact of popular culture on mathematics instruction. Dr. Beyranevand shares his mathematical knowledge on his website *Math with Matthew*.





FINE & PERFORMING ARTS

Dr. Christina Whittlesey

Department Coordinator of Fine and Performing Arts

Grade Level Serviced: K-12

Dr. Christina Whittlesey is the Fine and Performing Arts Coordinator for the Chelmsford Public Schools. For the past seventeen years she has been an educator in settings ranging from PreK to higher education. In addition to her work in Chelmsford, Dr. Whittlesey is also a member of the Berklee College of Music Education Advisory Board, has served on the Massachusetts Music Educators Association Executive Board, and organizes the Northeast Professional Educators Network Arts Conference each year to provide rich, content specific professional development opportunities to art, theater, and music teachers across the northeastern region of the state.

Dr. Whittlesey received an undergraduate degree from Berklee College of Music (2004), a master's degree in Music Education from Boston University (2009), and a Ph.D. with a focus on Educational Research and Evaluation from the University of Massachusetts Lowell (2019), where she was awarded the Education Department's "Outstanding Dissertation Award" for her work researching the educational experiences of transgender and non-binary students. She also serves as an Arts Education Ambassador for the Department of Secondary and Elementary Education to lead teacher professional development on the newly adopted 2019 Arts Curriculum Framework.

Her book, *It's Okay to Say "They": Tips for Educator Allies of Transgender and Non-Binary Students*, will be published by Dave Burgess Consulting, Inc. later this year.



ENGLISH LANGUAGE ARTS



Abbey Dick

Department Coordinator of English Language Arts
Grade Level Serviced: 5-12

Abbey Dick is the ELA Department Coordinator for Grades 5-12. Before coming to Chelmsford, Abbey was the Humanities Director for the Malden Public Schools. In her role as Director of Humanities, Abbey oversaw all curriculum, instruction, assessment, and professional development for English and Social Studies, as well as several other departments in the district. In her previous positions, she taught grades 6-12 ELA, including co-teaching courses. She also taught Advanced Placement Language and Literature.

Abbey also worked as a Literacy Specialist at the Department of Elementary and Secondary Education (DESE), where she learned about data analysis, assessment writing, grant evaluation, curriculum units, and the diverse needs of Massachusetts school districts. Although she enjoyed state-level education policy and learned many new things, she missed working in a district and came back to the public schools as an English teacher and then administrator.

Abbey's academic work includes a bachelor's degree from Assumption College in English and Women's Studies/ Philosophy, and a master's degree from Westfield State University in English and Secondary Education.





SCIENCE

Jon Morris

Department Coordinator of Science

Grade Level Serviced K-12

Jon Morris is the Department Coordinator of Science - K-12 for our district. Prior to starting this position, Jon was the Director of STEM for the Melrose Public Schools. Before that, he was a Physics Teacher at Chelmsford High School for 15 years. Using both his education and teaching experience, Jon has had the opportunity to work closely with teachers to develop and model lessons with a focus on engagement strategies that utilize technology to support education in STEM fields.

In addition to his science knowledge, Jon is well versed in the use of assessments to help inform teaching practices and engage colleagues in meaningful dialog around teaching and learning to move students forward. He believes that conversations and cultivating relationships is the key to change and creating a sense of community. In both roles, Jon has worked diligently to foster a shared commitment to high standards and high expectations for all students.

Jon's academic work includes a Bachelor of Science degree from Wittenberg University in Physics, and a master's degree from Lesley University in Science Education.



LANGUAGE AND CULTURE



Jessica Nollet

Department Coordinator of World Languages and Cultural Exchange
Grade Level Serviced: 7-12

Jessica Nollet is the Department Coordinator of World Languages and Cultural Exchange Programs. Prior to coming to Chelmsford, Jessica was a Spanish Teacher in the Framingham Public Schools.

In her eleven years as a middle and high school Spanish teacher, Jessica gained the instructional and pedagogical expertise necessary to provide a rigorous, engaging classroom and to become a leader in both her department and in the school community. Her experiences include being a teacher, leader, mentor, and administrative intern in both a diverse, progressive charter school and a large suburban public school. These settings strengthened her organizational and communication skills, allowing her to become an excellent administrative candidate at the secondary level. Through her coursework and her administrative internship at Framingham High School, she had frequent opportunities to collaborate and problem-solve with fellow colleagues and administrators, in order to improve the school culture and community. As the co-chair of the Principal's Advisory Committee, she led a group of teachers and administrators to design an advisory program at Framingham High School to support students' social, emotional, and academic needs.

Jessica's academic work includes a bachelor's degree from Mount Holyoke College in Education and Spanish, a master's degree from the University of Massachusetts, Boston in Education and Spanish, and a second master's degree from Endicott College in Organizational Leadership.





LITERACY, ELL, TITLE I

Kelly Rogers

Department Coordinator of Literacy/ELL and Director of Title
Grade Level Serviced: K-12

Kelly Rogers is the Department Coordinator of Literacy/ELL and Director of Title I. Prior to accepting this position, Kelly was the Center Elementary Principal in our district. Before she became Principal, she has held the roles of curriculum coordinator and classroom teacher. Throughout her career as an educator, she has made it a priority to provide opportunities for collaboration designed to solidify instruction within grade levels, vertically, and from school to school. Her educational experiences and dynamic personality have allowed her to build relationships quickly and make a positive impact on the students and staff. Kelly is a committed educator who has strong record of educational improvement, utilizing her communication, leadership, and organizational abilities as an asset to our team.

Kelly's academic work includes a bachelor's degree from The University of Texas at Austin in Speech Communication, a Master of Arts in Teaching from Simmons College and a Certificate of Advanced Graduate Studies from American International College in Educational Leadership.



HISTORY AND SOCIAL SCIENCE



Stephanie Quinn

Department Coordinator of History and Social Science

Grade Level Serviced: K-12

Prior to her role as Department Coordinator, Stephanie taught a variety of social studies courses at Chelmsford High School and coached Women's Soccer and Track and Field from 2002 to 2010. She is committed to her duties around curriculum, instruction, assessment, and professional development in the district. Stephanie was part of a team who brought both the Resiliency Program and the Advanced Placement Capstone Program to CHS, expanding opportunities for support and extending the learning for students. Currently, she is leading the review and revision of the entire K-12 Social Science curriculum to embed civics more deeply into the general curriculum. Building on the relationship Chelmsford Schools had with Fitchburg State University, Stephanie has taught several graduate level courses focused on the professional development of teachers in the district. These courses address both content and pedagogy and support the efforts of the district to enhance instructional practices in Universal Design for Learning and writing across the curriculum. She has also worked with teachers to create mini-content courses via google classroom to help expand the opportunities for professional development for teachers throughout Chelmsford Public Schools (CPS).

Stephanie's academic work includes a bachelor's degree from the University of New Hampshire in History, a master's degree from the University of New Hampshire in History and Secondary Education and a CAGS from Fitchburg State University in Interdisciplinary Studies (History/Education Administration).





PHYSICAL EDUCATION, HEALTH, AND FAMILY & CONSUMER SCIENCE

Katie Simes

Department Coordinator P.E./Health/Family/ Consumer Science

Grade Level Serviced: K-12

Katie Simes is the Physical Education, Health Education, and Family & Consumer Sciences Department Coordinator for grades PreK-12. Katie is also the co-chair of the Wellness Advisory Committee, chair of the Middle School LiveSmart Committee and co-chair of the District MTSS Committee. Katie is entering her 17th year in the Chelmsford Public schools and 8th year in her current administrative role. Prior to her department coordinator role, Katie taught physical education at Chelmsford High School, the Westlands Elementary School, CHIPS Preschool and the Byam Elementary School over the course of nine years. In the winter of 2012, Katie served as the Interim Principal at Byam Elementary.

Katie's academic work includes three degrees from Salem State University. Her bachelor's degree is in Physical Education and Health Education with a minor in Biology, a master's degree in Education with a focus on Physical Education and a CAGS in Educational Leadership.



TECHNOLOGY, BUSINESS & CHSTV



Dr. Marilyn Sweeney

Department Coordinator of Technology, Business, and CHSTV

Grade Level Serviced: K-12

Dr. Marilyn Sweeney is the Technology, Business and CHSTV Department Coordinator for Grades K-12. Dr. Sweeney oversees curriculum, instruction and assessment for all students in their Computer Lab classes. In addition, she oversees the Business Department with courses including Accounting, Marketing, Personal Financial Literacy and Management. The newest course, Retail Marketing and Management with accompanying Internship course operates the new Lions Locker School store at CHS which sells attire and monogrammed items to the CPS community while giving retail experience to CHS students. Dr. Sweeney supervises the CHSTV studio courses which include a Communication/Media course and a Media Internships course, where students create TV vignettes and learn to broadcast the Fall Football games to the entire Chelmsford cable subscriber network. Dr. Sweeney has been working closely with Mass Stem Hub and Worcester Polytechnic Institute (WPI) to bring Project Lead the Way STEM courses to Chelmsford. This includes Engineering and Computer Science at CHS, as well as a new Launch program for all 4 elementary schools this year.

Dr. Sweeney is a member of Massachusetts Computer Using Educators (MassCUE) and Massachusetts Science Educators Leadership Association (MSELA). She has presented at the International Society of Technology Educators (ISTE) conferences. She is an instructor at Fitchburg State University and teaches a graduate course on Blended Learning, as well as providing design technology professional development opportunities for Chelmsford teachers. She supervises the Computer Literacy Labs K-6 and Technology Engineering in Grades 7 and 8, Dr. Sweeney also works with MassSTEM Hub to organized a STEM Engineering Day for all CHS students and a subsequent Statewide PLTW STEM Fair held at CHS for PLTW students in Chelmsford and surrounding PLTW districts.

Dr. Sweeney's academic work includes a bachelor's degree from University of Massachusetts, Amherst in Education, and a master's degree from Lesley University in Computers in Education, and a doctorate from University of Massachusetts, Lowell in Educational Leadership.





SCHOOL COUNSELING & SEL

Laraine Wilson

Department Coordinator of SEL and School Counseling

Grade Level Serviced: K-12

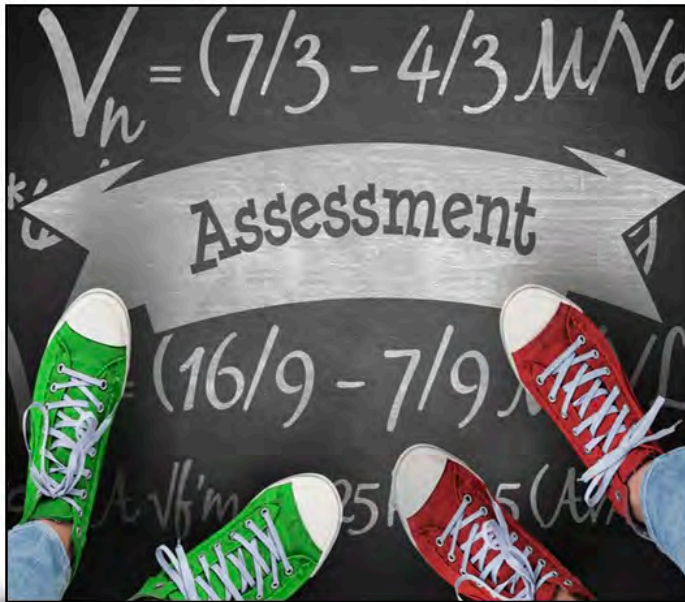


Laraine Wilson is the Department Coordinator of Social Emotional Learning and Counseling for K-12. Before coming to Chelmsford, Laraine was the Director of the Upper School at Cotting School in Lexington. In her role as Director of the Upper School, she was a member of the Senior Administration Team. She oversaw curriculum, instruction, assessment, and professional development for the Upper School as well as the Capstone Transition Program. She was also a member of the Mental Health and Crisis Response Teams. In her previous positions, she was a Student Support Coordinator in the Boston Public Schools as part of a partnership with the YMCA and Boston College, where she was an Adjunct Professor. Prior to that, Laraine was a School Counselor in Hartford, Connecticut. Although she enjoyed her work as a mental health professional, she developed a passion for leadership and sought out an administrative role, which led her first to Cotting and then to Chelmsford.

Laraine's academic work includes a bachelor's degree in Psychology from Clark University, and a master's degree from Boston University in School Counseling. She also pursued post-graduate studies through the Educator Leadership Program at Boston University's Lynch School of Education.



CONTACT INFORMATION



CURRICULUM TEAM

Stephanie Quinn- 978-251-5111 X5521

quinns@chelmsford.k12.ma.us

@quinn24

Katie Simes- 978-251-5111 X5553

simesk@chelmsford.k12.ma.us

@klsimes

Dr. Marilyn Sweeney- 978-251-5111 X5639

sweeneym@chelmsford.k12.ma.us

@CPSTechPD

Dr. Christina Whittlesey - 978-251-5111 X5602

whittleseyc@chelmsford.k12.ma.us

@ChristyWhittles

Laraine Wilson - 978-251-5111 X5601

wilsonl@chelmsford.k12.ma.us

@LaraineWilson

Dr. Linda Hirsch

Assistant Superintendent

978-251-5100 X6914

hirschl@chelmsford.k12.ma.us

@dr_hirsch

Chelmsford Public Schools

230 North Road

Chelmsford, MA 01824

Dr. Matthew Beyranevand - 978-251-5111

beyranevandm@chelmsford.k12.ma.us

@dr_beyranevand

Abbey Dick - 978-251-5111 X5667

dicka@chelmsford.k12.ma.us

@ELAChelmsford

Jon Morris- 978-251-5111 X565

morrisj@chelmsford.k12.ma.us

@ChelmsfordSci

Jessica Nollet- 978-251-5111 X5686

nolletj@chelmsford.k12.ma.us

Kelly Rogers- 978-251-5111 X5546

rogersk@chelmsford.k12.ma.us

@KellyRogers_CPS



CURRICULUM



EXPERT OCCUPATION CAPABILITIES
SPECIALIST EXPERIENCE
ADTS MATHEMATICS
GRADUATION EDUCATE MATHEMATICS INSTRUCT
MATH
TUDY
SCIENCE
COMPUTER STUDENTS E-LEARNING
TRAINING PROCESS
WEBINAR
DIPLOMA
SCHOOL
INFORMATION COMPETENCE LEADERSHIP SKILLS
TEACH
IDEAS
UNIVERSITY
LANGUAGE
TRAINING
BOOK
METHOD
GRADUATION
EDUCATE

E-LEARNING GRADUATION MASTER
RESEARCH SKILLS
BACHELOR
ONLINE
EDUCATE KNOWLEDGE SCIENCE TEXTBOOK DOCUMENT EDUCATIONAL
COLLEGE
LESSON
IDEA
COMMUNITY
STUDENT
EXAM
DEVELOPMENT LEARNING TRAINING MASTER
BOOK



**INDIVIDUAL STUDENTS
(SPECIAL EDUCATION)**

Individual Interventions and Supports: Targeted academics with individual instruction and programs.

Instruction Provided By:

- Special Educator
- Related Service Providers – OT, PT, SLP, School Counselor, BCBA, Specialized Reading Provider (i.e. OG/Wilson)
- Classroom Teacher Continues Core Curriculum

**BELOW GRADE-LEVEL STUDENTS
(NON-SPECIAL EDUCATION)**

Small Group Interventions and Supports: Small groups are used to teach academics skills, supplementing core curriculum and programs.

Instruction Provided By:

- Classroom Teacher
- Interventionist
- Reading Specialists

**ALL STUDENTS
(NON-SPECIAL EDUCATION)**

School-Wide Interventions and Supports: All students are taught academics skills with core curriculum and programs.

Instruction Provided By:

- Classroom Teacher

**MASSACHUSETTS
TIERED SYSTEM OF SUPPORT (MTSS)**

ELEMENTARY CURRICULUM PROGRAMS GRADES K-4

| SUBJECT | CURRICULUM PROGRAM | ADOPTION YEAR | PUBLISHER'S WEBSITE | ASSESSMENTS | GRADE LEVELS ASSESSED |
|---------------------------|---|----------------------|--|--|---------------------------------|
| ELA | JOURNEYS | 2011 | https://www.hmhco.com/programs/journeys | DIBELS RAN F & P BAS iREADY WRITING PROMPTS | K-1 K-1 K-4 K-4 K-4 |
| ELA | LIVELY LETTERS | 2008 | https://www.readingwithtlc.com/ | N/A | K-1 |
| ESL/ELL | REACH | 2013 | https://ngl.cengage.com/ | ELA ASSESSMENTS | K-4 |
| READING | LLI/TIER II READING SUPPORT | 2011 | https://www.fountasandpinnell.com/lli/ | F & P BAS | K-5 |
| MATH | MATH EXPRESSIONS | 2018 | https://www.hmhco.com/programs/math-expressions | iREADY | K-5 |
| HISTORY & SOCIAL SCIENCES | MULTIPLE RESOURCES JOURNEYS PROGRAM G. 3 & 4 NYSTROM ATLAS PROGRAMS | 2011/2019 | N/A | iREADY WRITING PROMPTS | K-4 K-4 |
| SCIENCE | FOSS SCIENCE | 2016 | https://www.fossweb.com/ | FOSS ASSESSMENTS | K-4 |
| TECHNOLOGY | PROJECT LEAD THE WAY | 2018 | https://www.pltw.org/our-programs/pltw-launch | PLTW ASSESSMENTS | K-4 |
| TECHNOLOGY | DIGITAL CITIZENSHIP AND SAFETY – VARIOUS PUBLISHERS - Net Smartz; BrainPop JR.; Scratch | 2016 | https://www.netsmartzkids.org/videos/ https://jr.brainpop.com/ | NET SMARTZ ACTIVITIES BRAIN POP QUIZZES COMMON ASSESSMENTS | K-4 K-4 |

ELEMENTARY CURRICULUM PROGRAMS GRADES K-4

| SUBJECT | CURRICULUM PROGRAM | ADOPTION YEAR | PUBLISHER'S WEBSITE | ASSESSMENTS | GRADE LEVELS ASSESSED |
|----------------|--------------------------------------|----------------------|---|----------------------------------|------------------------------|
| TECHNOLOGY | CODE.ORG | 2016 | https://code.org/ | CODE.ORG ASSESSMENTS | K-4 |
| TECHNOLOGY | KEYBOARDING WITHOUT TEARS | 2016 | https://www.lwtears.com/kwt | KBWOT ASSESSMENTS | K-4 |
| MUSIC | FEIERABEND FIRST STEPS | 2011 | http://www.giamusic.com/music_education/johnfeierabend-main-first-steps.cfm | FEIERBEND ACTIVITIES | K-4 |
| | DESE MUSIC STANDARDS | 2019 | http://www.doe.mass.edu/frameworks/current.html | COMMON ASSESSMENTS | K-4 |
| ART | ART OF ED | 2011 | https://theartofeducation.edu/ | ART OF ED ACTIVITIES | K-4 |
| | DESE ART STANDARDS | 2019 | http://www.doe.mass.edu/frameworks/current.html | COMMON ASSESSMENTS | K-4 |
| P. E | GRADE LEVEL OUTCOMES FOR K-12 P.E. | 2011 | https://www.shapeamerica.org/uploads/pdfs/2017/Grade-Level-Outcomes-for-K-12-Physical-Education.pdf | GRADE LEVEL OUTCOMES ASSESSMENTS | K-4 |
| | P.E. METRICS 3 RD EDITION | 2019 | PAPERBACK BOOK | COMMON ASSESSMENTS | K-4 |
| SEL | SECOND STEP | 2017 | https://www.secondstep.org/elementary-school-curriculum | SECOND STEP ASSESSMENTS | K-4 |

MIDDLE SCHOOL CURRICULUM PROGRAMS GRADES 5-8

| SUBJECT | CURRICULUM PROGRAM | ADOPTION YEAR | PUBLISHER'S WEBSITE | ASSESSMENTS | GRADE LEVELS ASSESSED |
|---------------------------|--|----------------------|---|---|------------------------------|
| ELA | JOURNEYS (GRADE 5 ONLY) | 2011 | https://www.hmhco.com/programs/journeys | iREADY | 5 |
| | MASSACHUSETTS STATE FRAMEWORKS FOR ELA | 2017 | http://www.doe.mass.edu/frameworks/ela/2017-06.pdf | iXL COMMON ASSESSMENTS | 5 5 |
| ELA | HOUGHTON MIFFLIN HARCOURT | 2012 | https://www.hmhco.com/ | iREADY | 6-8 |
| | MASSACHUSETTS STATE FRAMEWORKS FOR ELA | 2017 | http://www.doe.mass.edu/frameworks/ela/2017-06.pdf | iXL COMMON ASSESSMENTS | 6-8 6-8 |
| ESL/ELL | INSIDE | 2013 | https://ngl.cengage.com/ | ELA ASSESSMENTS | 5-8 |
| READING | LLI/TIER II READING SUPPORT | 2011 | https://www.fountasandpinnell.com/lli/ | F & P BAS | 5-8 |
| MATH | BIG IDEAS | 2012 | https://www.bigideasmath.com/home/ | iREADY | K-5 |
| HISTORY & SOCIAL SCIENCES | PEARSON GR. 5 MYWORLD SOCIAL STUDIES BUILDING OUR COUNTY | 2019 | https://www.pearsonschool.com/index.cfm?locator=PS19Ie&PMDbProgramID=85641 | COMMON ASSESSMENTS (iREADY NON-FICTION TEXT) | 5 |

MIDDLE SCHOOL CURRICULUM PROGRAMS GRADES 5-8

| SUBJECT | CURRICULUM PROGRAM | ADOPTION YEAR | PUBLISHER'S WEBSITE | ASSESSMENTS | GRADE LEVELS ASSESSED |
|---------------------------|--|---------------|---|---|-----------------------|
| HISTORY & SOCIAL SCIENCES | NYSTROM ATLAS | 2019/2014 | http://www.nystromworldatlas.com/site/frame_all.html | COMMON ASSESSMENTS | 5-7 |
| HISTORY & SOCIAL SCIENCES | PEARSON GR. 6 WORLD STUDIES | 2010 | https://www.pearsonschool.com/index.cfm?locator=PSZw3j&PMDbProgramId=75201&elementType=correlations | COMMON ASSESSMENTS (iREADY NON-FICTION TEXT) | 6 6 |
| HISTORY & SOCIAL SCIENCES | WORLD HISTORY ATLAS | 2015 | PAPERBACK BOOK | COMMON ASSESSMENTS | 6-8 |
| HISTORY & SOCIAL SCIENCES | PEARSON GR. 7 MYWORLD AND EARLY AGES | 2011 | https://www.pearsonschool.com/index.cfm?locator=PSZw3j&PMDbProgramId=75201&elementType=correlations | COMMON ASSESSMENTS (iREADY NON-FICTION TEXT) | 7 7 |
| HISTORY & SOCIAL SCIENCES | PEARSON GR. 8 WORLD HISTORY AND THE MODERN ERA | 2016 | https://www.pearsonschool.com/index.cfm?locator=PSZw3j&PMDbProgramId=75201&elementType=correlations | COMMON ASSESSMENTS (iREADY NON-FICTION TEXT) | 8 8 |
| SCIENCE | FOSS SCIENCE | 2016 | https://www.fossweb.com/ | FOSS ASSESSMENTS | 5-6 |
| SCIENCE | MCGRAW HILL | 2017 | https://www.mheducation.com/prek-12/explore/6-12-science/programs.html | COMMON ASSESSMENTS | 7-8 |
| TECHNOLOGY | PROJECT LEAD THE WAY: DESIGN & MODELING; AUTOMATION & ROBOTICS | 2014 | https://www.pltw.org/our-programs/pltw-gateway | PLTW ASSESSMENTS | 7-8 |
| | GOOGLE | 2016 | https://www.google.com/ | COMMON ASSESSMENTS | 5-6 |
| | CODE.ORG | 2016 | https://code.org/ | COMMON ASSESSMENTS | 5-6 |

MIDDLE SCHOOL CURRICULUM PROGRAMS GRADES 5-8

| SUBJECT | CURRICULUM PROGRAM | ADOPTION YEAR | PUBLISHER'S WEBSITE | ASSESSMENTS | GRADE LEVELS ASSESSED |
|--------------------------------------|---------------------------|----------------------|---|-----------------------|------------------------------|
| MUSIC (BAND) | BREEZIN' THROUGH THEORY | 2020 | https://breezinthrutheory.com/ | BREEZIN' ASSESSMENTS | 5-8 |
| | STANDARDS OF EXCELLENCE | 2017 | https://kjos.com/band/methods-by-series/standard-of-excellence-comprehensive-band-method.html | STANDARDS ASSESSMENTS | 5-8 |
| | DESE MUSIC STANDARDS | 2019 | http://www.doe.mass.edu/frameworks/current.html | COMMON ASSESSMENTS | 5-8 |
| MUSIC (CHORUS) | BREEZIN' THROUGH THEORY | 2019 | https://breezinthrutheory.com/ | BREEZIN' ASSESSMENTS | 5-8 |
| | CONVERSATIONAL SOLFEGE | 2016 | https://www.giamusic.com/products/P-5380.cfm | CS ASSESSMENTS | 5-8 |
| | DESE MUSIC STANDARDS | 2019 | http://www.doe.mass.edu/frameworks/current.html | COMMON ASSESSMENTS | 5-8 |
| MUSIC (ORCHESTRA) | BREEZIN' THROUGH THEORY | 2019 | https://breezinthrutheory.com/ | BREEZIN' ASSESSMENTS | 5-8 |
| | DESE MUSIC STANDARDS | 2019 | http://www.doe.mass.edu/frameworks/current.html | COMMON ASSESSMENTS | 5-8 |
| MUSIC (MS MUSIC CONCEPTS & CULTURES) | BREEZIN' THROUGH THEORY | 2019 | https://breezinthrutheory.com/ | BREEZIN' ASSESSMENTS | 5-8 |
| | GUITAR 1 HOT BOOKS | 2019 | PAPERBACK BOOK | GUITAR 1 ASSESSMENTS | 5-8 |
| | DESE MUSIC STANDARDS | 2019 | http://www.doe.mass.edu/frameworks/current.html | COMMON ASSESSMENTS | 5-8 |

MIDDLE SCHOOL CURRICULUM PROGRAMS GRADES 5-8

| SUBJECT | CURRICULUM PROGRAM | ADOPTION YEAR | PUBLISHER'S WEBSITE | ASSESSMENTS | GRADE LEVELS ASSESSED |
|-----------------|---|----------------------|---|----------------------------------|------------------------------|
| ART | ART OF ED | 2018 | https://theartofeducation.edu/ | ART OF ED ACTIVITIES | 5-8 |
| | DESE ART STANDARDS | 2019 | http://www.doe.mass.edu/frameworks/current.html | COMMON ASSESSMENTS | 5-8 |
| P. E | GRADE LEVEL OUTCOMES FOR K-12 P.E. | 2011 | https://www.shapeamerica.org/uploads/pdfs/2017/Grade-Level-Outcomes-for-K-12-Physical-Education.pdf | GRADE LEVEL OUTCOMES ASSESSMENTS | 5-8 |
| | P.E. METRICS 3 RD EDITION | 2019 | PAPERBACK BOOK | COMMON ASSESSMENTS | 5-8 |
| HEALTH | NATIONAL HEALTH STANDARDS | 2007 | https://people.uwplatt.edu/~mccabec/nationalstandards.pdf | COMMON ASSESSMENTS | 5-8 |
| HEALTH | LESSON PLANNING FOR SKILL- BASED HEALTH EDUCATION, HUMAN KINETICS | 2019 | https://us.humankinetics.com/ | COMMON ASSESSMENTS | 5-8 |
| HEALTH | THE ESSENTIALS OF TEACHING HEALTH EDUCATION, HUMAN KINETICS | 2016 | https://us.humankinetics.com/ | COMMON ASSESSMENTS | 5-8 |
| HEALTH/SEL | SIGNS OF SUICIDE, MINDWISE INOVATIONS | 2013 | https://www.sprc.org/resources-programs/sos-signs-suicide | SOS ACTIVITES | 7-8 |
| WORLD LANGUAGES | EXPRESATE/BIEN DIT! LEVELS 1-4 | 2011 | https://go.hrw.com/gopages/wl-fr.html | COMMON ASSESSMENTS | 7-8 |
| WORLD LANGUAGES | EXPRESATE | 2011 | https://go.hrw.com/gopages/wl-fr.html | COMMON ASSESSMENTS | 7-8 |
| WORLD LANGUAGES | BIEN DIT! | 2011 | https://go.hrw.com/gopages/wl-fr.html | COMMON ASSESSMENTS | 7-8 |

HIGH SCHOOL CURRICULUM PROGRAMS GRADES 9-12

| SUBJECT | CURRICULUM PROGRAM | ADOPTION YEAR | PUBLISHER'S WEBSITE | ASSESSMENTS | GRADE LEVELS ASSESSED |
|---------------------------|---|----------------|---|------------------------|-----------------------|
| ELA | VARIOUS WORKS OF LITERATURE (FICTION AND NON-FICTION) | MULTIPLE YEARS | https://www.chelmsford.k12.ma.us/Page/1778 | COMMON ASSESSMENTS | 9-12 |
| | MASSACHUSETTS STATE FRAMEWORKS FOR ELA | 2017 | http://www.doe.mass.edu/frameworks/ela/2017-06.pdf | | 9-12 |
| ESL/ELL | EDGE | 2013 | https://ngl.cengage.com/ | ELA COMMON ASSESSMENTS | 9-12 |
| MATH | BIG IDEAS | 2015 | https://www.bigideasmath.com/home/ | COMMON ASSESSMENTS | 9-12 |
| HISTORY & SOCIAL SCIENCES | PEARSON GR. 9 WORLD HISTORY THE MODERN ERA | 2012 | https://www.pearsonschool.com | COMMON ASSESSMENTS | 9 |
| | PEARSON THE HERITAGE OF WORLD CIVILIAZATIONS | 2012(H) | | COMMON ASSESSMENTS | 9(H) |
| HISTORY & SOCIAL SCIENCES | PEARSON GRS. 10/11 UNITED STATES HISTORY | 2015,2016 | https://www.pearsonschool.com | COMMON ASSESSMENTS | 10-11 |
| HISTORY & SOCIAL SCIENCES | PEARSON - BY THE PEOPLE | 2012 | https://www.pearsonschool.com | COMMON ASSESSMENTS | 10-11 |
| HISTORY & SOCIAL SCIENCES | CENAGE/GALE | N/A | https://www.gale.com/ | ON-LINE RESOURCE | 9-12 |

HIGH SCHOOL CURRICULUM PROGRAMS GRADES 9-12

| SUBJECT | CURRICULUM PROGRAM | ADOPTION YEAR | PUBLISHER'S WEBSITE | ASSESSMENTS | GRADE LEVELS ASSESSED |
|---------------------------|---|---------------|---|--------------------|-----------------------|
| HISTORY & SOCIAL SCIENCES | PEARSON PSYCHOLOGY (AP) | 2007 | https://www.pearsonmylabandmastering.com/northamerica/mypsychlab/ | COMMON ASSESSMENTS | 11-12 |
| | PEARSON PSYCHOLOGY | 2012 | | | |
| HISTORY & SOCIAL SCIENCES | GLENCOE SOCIOLOGY | 2010 | ASSUMED BY MCGRAW HILL https://www.mheducation.com/highered/sociology.html | COMMON ASSESSMENTS | 11-12 |
| HISTORY & SOCIAL SCIENCES | PEARSON GR. INTERNATIONAL RELATIONS – THE NEW WORLD | 2010 | https://www.pearsonschool.com | COMMON ASSESSMENTS | 12 |
| HISTORY & SOCIAL SCIENCES | GLENCO – STREET LAW | 2011 | http://glencoe.mheducation.com/sites/007879983x/index.html | COMMON ASSESSMENTS | 10-12 |
| HISTORY & SOCIAL SCIENCES | HOUGHTON MIFFLIN – THE CHALLENGE OF DEMOCRACY | 2005 | http://college.cengage.com/polisci/janda/c hall_dem/8e/instructors/parallel/index.html | COMMON ASSESSMENTS | 11-12 |
| SCIENCE | PEARSON - BIOLOGY | 2019 | https://www.pearsonschool.com | COMMON ASSESSMENTS | 9-10 |
| SCIENCE | PEARSON - BIOLOGY | 2019 | https://www.pearsonschool.com | COMMON ASSESSMENTS | 10-11 |
| SCIENCE | OPENSTAX - PHYSICS | 2018 | https://openstax.org/details/books/college-physics | COMMON ASSESSMENTS | 11-12 |
| BUSINESS | READ MARKETING NOW | 2019 | https://www.readmarketingnow.com/ | COMMON ASSESSMENTS | 9-12 |

HIGH SCHOOL CURRICULUM PROGRAMS GRADES 9-12

| SUBJECT | CURRICULUM PROGRAM | ADOPTION YEAR | PUBLISHER'S WEBSITE | ASSESSMENTS | GRADE LEVELS ASSESSED |
|--|--|---------------|--|--|-----------------------|
| BUSINESS | KNOWLEDGE MATTERS VIRTUAL BUSINESS (MARKETING; MANAGEMENT; BUSINESS CAREER PATHWAYS) | 2019 | https://knowledgematters.com/highschool/management/ https://knowledgematters.com/highschool/retailing/ https://knowledgematters.com/highschool/hotel/ https://knowledgematters.com/highschool/sports/ | SIMULATION ASSESSMENTS COMMON ASSESSMENTS | 9-12 |
| BUSINESS | BUSINESS LAW | 2019 | https://www.cengage.com/discipline-business-law/ | COMMON ASSESSMENTS | 9-12 |
| BUSINESS | RETAIL MARKETING AND MANAGEMENT | 2018 | Lions Locker store project-based learning | PROJECT-BASED (PBL) ASSESSMENTS | 9-12 |
| BUSINESS | ACCOUNTING | 2019 | https://www.cengage.com/discipline-accounting/ | MINDTAP COMMON ASSESSMENTS | 9-12 |
| BUSINESS | PERSONAL FINANCIAL LITERACY | 2019 | https://www.ngpf.org/ | ONLINE RESOURCES | 9-12 |
| TECHNOLOGY | PROJECT LEAD THE WAY – ENGINEERING - COMPUTER SCIENCE | 2017 | https://www.pltw.org/ | PLTW ASSESSMENTS | 9-12 |
| TECHNOLOGY | COMPUTER SCIENCE | 2019 | http://schram.org/ExpoCS2018/ExpoCS2018.html | COMMON ASSESSMENTS | 9-12 |
| MUSIC (BAND, CHOIR, ORCHESTRA, MUSIC THEORY) | DESE MUSIC STANDARDS | 2019 | http://www.doe.mass.edu/frameworks/current.html | COMMON ASSESSMENTS | 9-12 |

HIGH SCHOOL CURRICULUM PROGRAMS GRADES 9-12

| SUBJECT | CURRICULUM PROGRAM | ADOPTION YEAR | PUBLISHER'S WEBSITE | ASSESSMENTS | GRADE LEVELS ASSESSED |
|---------------------------|--|---------------|---|----------------------------------|-----------------------|
| MUSIC (GUITAR) | GUITAR 1 HOTBOOKS: NEW EDITION | 2019 | HARDCOVER BOOK | COMMON ASSESSMENTS | 9-12 |
| | DESE MUSIC STANDARDS | 2019 | | COMMON ASSESSMENTS | 9-12 |
| MUSIC (DIGITAL WORLD) | DESE MUSIC STANDARDS, MEDIA ARTS STANDARDS <i>DIGITAL CREATION TOOLS: GARAGEBAND, iMOVIE</i> | 2019 | http://www.doe.mass.edu/frameworks/current.html | PROJECT-BASED ASSESSMENTS | 9-12 |
| STUDIO ART, MEDIA ARTS | ART OF ED | 2019 | www.artofed.com | COMMON ASSESSMENTS | 9-12 |
| | DESE STUDIO ART AND MEDIA ARTS STANDARDS <i>DIGITAL CREATION TOOLS: CREATIVE SUITE, PHOTOSHOP, MAYA</i> | 2019 | http://www.doe.mass.edu/frameworks/current.html | COMMON ASSESSMENTS | 9-12 |
| THEATER, FILMMAKING | DESE THEATER ARTS STANDARDS, MEDIA ARTS STANDARDS | 2019 | http://www.doe.mass.edu/frameworks/current.html | COMMON ASSESSMENTS | 9-12 |
| P. E | GRADE LEVEL OUTCOMES FOR K-12 P.E. | 2011 | https://www.shapeamerica.org/uploads/pdfs/2017/Grade-Level-Outcomes-for-K-12-Physical-Education.pdf | GRADE LEVEL OUTCOMES ASSESSMENTS | 9-12 |
| | P.E. METRICS 3 RD EDITION | 2012 | PAPERBACK BOOK | COMMON ASSESSMENTS | 9-12 |

HIGH SCHOOL CURRICULUM PROGRAMS GRADES 9-12

| SUBJECT | CURRICULUM PROGRAM | ADOPTION YEAR | PUBLISHER'S WEBSITE | ASSESSMENTS | GRADE LEVELS ASSESSED |
|------------------------------|---|---------------|---|--------------------|-----------------------|
| HEALTH | NATIONAL HEALTH STANDARDS | 2007 | https://people.uwplatt.edu/~mccabec/nationalstandards.pdf | COMMON ASSESSMENTS | 9-12 |
| HEALTH | LESSON PLANNING FOR SKILL- BASED HEALTH EDUCATION, HUMAN KINETICS | 2019 | https://us.humankinetics.com/ | COMMON ASSESSMENTS | 9-12 |
| HEALTH | THE ESSENTIALS OF TEACHING HEALTH EDUCATION, HUMAN KINETICS | 2016 | https://us.humankinetics.com/ | COMMON ASSESSMENTS | 9-12 |
| HEALTH/SEL | BREAKING FREE FROM DEPRESSION, MINDWISE INOVATIONS | 2013 | http://www.childrenshospital.org/Centers-and-Services/Programs/A--E/boston-childrens-hospital-neighborhood-partnerships-program/break-free-from-depression-program | BRFD ACTIVITES | 9-12 |
| FAMILY AND CONSUMER SCIENCES | GOODHEART-WILCOX - CHILD DEVELOPMENT EARLY STAGES THROUGH AGE 12 – EIGHTH EDITION | 2016 | https://www.g-w.com/child-development-2016 | GW ASSESSMENTS | 9-12 |
| WORLD LANGUAGES (SPANISH) | EXPRESATE <i>LANGUAGE LAB SOFTWARE: SANAKO</i> | 2011 | www.gohrw.com | COMMON ASSESSMENTS | 9-12 |
| WORLD LANGUAGES (FRENCH) | BIEN DIT! <i>LANGUAGE LAB SOFTWARE: SANAKO</i> | 2011 | www.gohrw.com | COMMON ASSESSMENTS | 9-12 |

DIGITAL LEARNING TOOLS

i-Ready

iReady assesses students' academic skills in reading, helping teachers design individualized instruction for them based on their unique needs while setting a personalized pathway for students within the iReady Instruction.

iXL

IXL (from "I excel") is a math and language arts practice website for K-12 (subscription based). It has unlimited questions on thousands of math and English language arts state standards and a comprehensive reporting and assessment system.

LEXIA

Lexia® Core5® Reading supports educators in providing differentiated literacy instruction for students of all abilities in grades pre-K–5. Lexia's research-proven program provides explicit, systematic, personalized learning in the six areas of reading instruction, targeting skill gaps as they emerge, and providing teachers with the data and student-specific resources they need for individual or small-group instruction.

Raz-Kids

Raz-Kids is an award-winning teaching product that provides comprehensive leveled reading resources for students. ... Every eBook is available in online and mobile formats, and allows students to listen to, read at their own pace, and record themselves reading.

Brain Pop

BrainPop is a group of educational websites with over 1,000 short animated movies for students in grades K-12, together with quizzes and related materials, covering the subjects of science, social studies, English, mathematics, engineering and technology, health, and arts and music.

Language Live

LANGUAGE!® Live is a comprehensive, blended literacy solution. One portion of the program is face-to-face teacher-led instruction; the other portion is technology-based, independent learning.

Google G Suite for Education

G Suite for Education is the same set of apps that you know and love—Gmail, Docs, Drive, Calendar, Hangouts, and more— but designed with new intelligent features that make work easier and bring teachers and students together.

Edgenuity

Edgenuity's® ELA, math, science, social studies, world languages, Advanced Placement®, CTE, and elective courses are designed to help students in grades 9–12 meet the rigor of Common Core and state standards, as well as your state's graduation requirements. Our courses can be used for initial credit or credit recovery as well as content or concept recovery in order to ensure subject-area mastery.

Overdrive

OverDrive is a free service offered by your library or school that lets you borrow digital content (like ebooks and audiobooks) anytime, anywhere. Every OverDrive collection is slightly different because each library or school picks the digital content they want for their users.

Keyboarding Without Tears

Keyboarding Without Tears is an elementary web-based curriculum that makes it easy for teachers to teach their students pre-keyboarding and keyboarding skills such as typing, general computer readiness, digital citizenship and online test prep – they need to succeed on any assignment, in any setting.

Office 365

Office 365 is an integrated experience of apps and services, designed to help you pursue your passion and grow your business. Get apps like Word, Excel, PowerPoint, and more, updated monthly with the latest features and security updates.

Project Lead The Way

PLTW empowers students to develop and apply in-demand, transportable skills by exploring real-world challenges. Through our pathways in computer science, engineering, and biomedical science, students not only learn technical skills, but also learn to solve problems, think critically and creatively, communicate, and collaborate. We also provide teachers with the training, resources, and support they need to engage students in real-world learning.

Pilot Apps/Plug-Ins

Class Kick - Tool to allow students to fill in PDFs and send/receive work with teachers.

Pear Deck - Presentation tool that allows real time assessment of student learning.

Kami - Allows users to annotate on cleartouch TVs, over any application, and save the output easily to Google Drive.



Chelmsford Public Schools - A Future Ready District