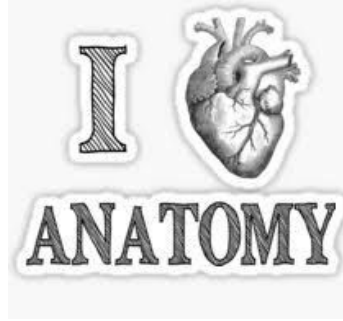


# HONORS ANATOMY & PHYSIOLOGY SYLLABUS



## CLASS OVERVIEW & GOALS

This is a one year, 10 credit class where we will cover as much information about the human body as time allows. Like it or not, you will learn a lot! By the end of the class you will be able to...


- 1) Name major structures of the body (*ANATOMY*) and state their functions (*PHYSIOLOGY*)
- 2) Discuss numerous diseases that disrupt normal anatomy & physiology
- 3) Perform medical/lab skills like dissecting a feline and properly using: microscopes, blood pressure cuffs, spirometers, & stethoscopes

## CLASSROOM EXPECTATIONS

- \*Be polite, respectful, and cooperative
- \*Stay on task
- \*Actively participate (raise your hand, contribute to your group)
- \*Stay alert, awake, and on task
- \*Be on time & prepared for class
- \*Practice good citizenship (help others and clean up after yourself)
- \*Turn off electronic devices



# School Rules!

Mrs. T's Rules	Potential Consequences for Breaking Rule <i>(may vary depending on the situation)</i>
<b>1. Follow lab safety contract &amp; teacher instructions</b>	<b>Zero on assignment, removed from lab/class</b>
<b>2. No eating or drinking in classroom</b> *bottle of water in your bag is encouraged *no open drinks/food on desk or lab bench *coffee can be left on shelf by the door (except during dissection days) *in case of emergency (low blood sugar/light headed) notify me & get a hall pass	1 <sup>st</sup> time – verbal warning  2 <sup>nd</sup> time – parents contacted to discuss what is causing the problem   <small>No Food or Drink</small>
<b>3. Respect others' space and property</b> * don't throw things * don't touch or damage others' property * keep hands and feet to yourself * don't use profane or inappropriate language	Varies from verbal warning to losing points on assignments to removal from class and conference with dean/parents (depending on frequency and severity of situation)
<b>4. Take good care of classroom equipment and furniture</b> * don't touch/use items unless directed to * don't play with or lean on faucets * don't sit on top of the lab benches * don't bang drawers or cabinets * don't write on desks or stick gum on them	Varies from verbal warning to losing points on assignments to removal from class and conference with dean/parents (depending on frequency and severity of situation)
<b>5. Do not copy others or allow them to copy from you</b> * <i>take pride in doing your own work...it is the pathway to success</i> *do not plagiarize or cut/paste from the internet – use your own words *tell me or your Guidance Counselor if you are being pressured to give someone else your work	<b>Zero on the assignment for <u>both</u> students (the one who copied and the one who allowed the copying)</b>
<b>6. No cell phone use in class</b> *no texting/photos/video/games etc. *should be in your pocket/bag – <u>not</u> in your hands or on your desk top	During an exam period – <b>zero on exam</b> During regular class – 1 <sup>st</sup> time – verbal warning 2 <sup>nd</sup> time – phone confiscated until end of class 3 <sup>rd</sup> + time – phone sent to Dean for the day

## COURSE CONTENT/TOPICS

UNIT	TITLE	WHEN? (ESTIMATED)	EXAMPLE ACTIVITIES & ASSESSMENTS
1. Introduction	Anatomical terminology	September	Lab Packet Exam Mini-project: Careers in A&P
2. Review	Biology topics & Microscope Use	September	Microscope Lab Packet or Lab Quiz Quiz: Biology Topics
3. Histology	Tissues of the body	October	Histology Lab Practical
4. Integument	Skin	November	Lab Packet Exam
5. Skeletal System	Skeletal tissues Skeletal system Articulations	November/ December/	Lab Packet Bone Lab Practical Exam
	Mid-Year Project: Disease Diaries	January	
6. Nervous System	Nervous system cells Central nervous system Peripheral nervous system Sense organs	January	Lab Packet Lab Practicals (brain, eye) ? Quiz (or include in Muscle Exam)
7. Muscular System	Physiology of the muscular system Anatomy of the muscular system	February/March	Lab Packet Lab Practical (muscle dissections) Exam
8. Cardiovascular System	Blood Anatomy of the Cardiovascular System Physiology of the Cardiovascular System Lymphatic System	April/May	Lab Packet Lab Practical (heart, blood vessel dissections) Exam
9. Respiratory System	Anatomy & Physiology Respiratory System	May	Lab practical (dissections)
10. Digestive System	Anatomy & Physiology Digestive System	May/June	Lab practical (dissections)
11. Urinary System	Anatomy & Physiology Urinary System	May/June	Lab practical (dissections)
12. Juniors ☺	Finish up/catch up time/room clean ups Project: Review Games Review for Final Exam	June	Project: Review Games Final Exam

### **TEXTBOOK:**

***Human Anatomy & Physiology*** by Marieb and Hoehn

11th Edition, 2019

ISBN-13: 9780134756363

Replacement Cost = \$247.95

## **BASIC PROCEDURES:**

- ✓ Excused absence (meaning illness, field trips/college visits, family emergencies, or legal obligations)? Missed labs or tests must be made up within one week (after school on the Tuesday following your absence).
- ✓ Missed homework is due in the next class or see me if you have extenuating circumstances.
- ✓ Whenever you are absent, use your lab packet to keep track of what you are missing that day and to keep up with the homework. This info is also posted on my X2 website.
- ✓ Tardy to class with no pass? Oops! Zero for that homework quiz
- ✓ Late homework is not accepted (it will be a zero). Late lab packets will lose 5 points for each day they are late.

## **CLASS MATERIALS/SHOPPING LIST**



- \*Large binder with loose-leaf paper
- \*Pen (2 colors) /pencil
- \*Colored pencils & highlighter
- \*Sneakers for lab work
- \*Covered textbook: does *not* need to be brought to class with class unless noted ☺
- Optional: Human Anatomy & Physiology Lab Manual by Elaine Marieb – cat version (11<sup>th</sup> edition, 2013) (try Amazon or BN.com ~\$24)
- Optional: Anatomy Coloring Books (Nursing/Medical section, any large book store)
- Optional: Anatomy Flashcard Sets (also available at book stores) or Apps

## **GRADING**

Grading is calculated based on total points earned for assignments during the term. Exams are each worth 100 points, homework quizzes are 10 points, and labs/lab packets vary around 75 points. Typically, this results in around 40% of the grade coming from exams, 40% from lab/classwork, and 20% from homework.

